

Join Our Team

Weber Thompson is an award-winning architecture, interior design, and landscape architecture design firm.

We work on a wide variety of project types, from affordable housing, mid-rise and high-rise multi-family, commercial office as well as hospitality and retail. Our projects are complex, and you will work hard – but you will be alongside a great group of people who prioritize collaboration and humor in their day-to-day work. We work in a light filled, Living Building office in the middle of the highly energized Fremont neighborhood in Seattle.

Our office is a friendly and low-key, yet deadline-driven environment with minimal egos. We pride ourselves on our commitment to the environment, community, and our clients. Our office culture welcomes humor and nurtures career growth. We offer a robust package of benefits, and a flexible, hybrid working schedule.

Weber Thompson is committed to creating a diverse environment and are proud to be a JUST Certified Company.

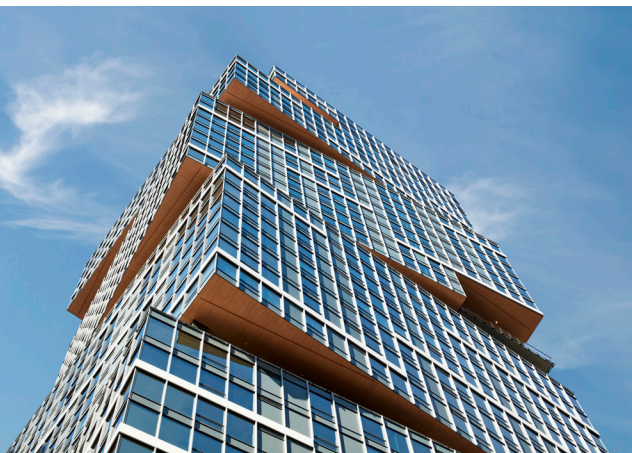
NOW HIRING:

Full-time Project Designer

Working closely with our Design Principals, this position develops design concepts, creates high quality visuals, and manages design presentation materials and digital models. We need someone with a great design eye, who is comfortable reading and interpreting code, and is a savvy problem solver. Resilience and flexibility are requirements.

You must be a master at Revit, Rendering software and Adobe CC, especially Photoshop and InDesign. **A minimum of five years of experience in an architecture firm** working on large projects from conceptual design through entitlement documentation and public design reviews is required.

A degree in architecture from an accredited program is required. Sustainability Certification as well as licensure are preferred but not required for the position.



POSITION REQUIREMENTS + BENEFITS

Required:

- 5-8+ years overall experience
- A degree in Architecture from an accredited program
- Experience working on large projects from conceptual design through entitlement documentation and public design reviews
- Experience with Revit, Rendering software and Adobe CC, especially Photoshop and InDesign
- Excellent communication skills
- Excellent collaboration skills
- Creative approach to complex design prompts
- A great design eye and comfort reading and interpreting code
- Interest in sustainable strategies and design

Preferred:

- Sustainability certification

Benefits & Opportunities:

- Paid Time Off
- Medical, dental, vision, life insurance
- 401(k) Participation
- Healthcare spending or reimbursement accounts, such as HSAs, FSAs, and HRAs
- Short-term & long-term disability insurance
- Ability to work alongside a group of creative thinkers
- Room to experiment and take initiative on new ideas
- Professional growth opportunities
- Ability to participate in firm-wide initiatives such as our Culture Club, Sustainabilityteam or Equity, Diversity, and Inclusion task force



WEBER THOMPSON

LEARN MORE & APPLY

To apply:

Please send your cover letter (important!) and resume to jobs@weberthompson.com. If you're excited about the position but feel you don't check every box in the requirements, please apply anyway! Studies have shown that marginalized communities are less likely to apply to jobs unless they meet every single qualification. As a JUST Certified Company, we are committed to building an inclusive, diverse, equitable, and accessible workplace, and you may be the perfect candidate for one of our open positions!

To learn more about our firm culture, benefits and projects, visit weberthompson.com or find us on [LinkedIn](#), [Instagram](#), [Twitter](#), and [Facebook](#).

Thank you!

