



WEBER THOMPSON

Interior Design Studio



ABOUT

Our Firm

Founded in 1988, Weber Thompson is an award-winning architecture, interior design, landscape architecture and sustainable design firm. We have a staff of architects, space planners, interior designers, master planners, LEED APs, landscape architects and construction specialists. We even have an MBA.

Our dynamic, integrated design practice is led by curious people who challenge conventional wisdom, lead with integrity, and design with guts. We integrate our disciplines and underscore them with strong technical experience, a commitment to sustainability and a heartfelt dedication to creating spaces that serve their future users and operators.

“Their strong relationship skills mean they ‘act as a team’ at all times through every project.”

– Weber Thompson Client

HIGH RISE

MULTIFAMILY RESIDENTIAL

AFFORDABLE HOUSING

SUSTAINABLE DESIGN

STUDENT HOUSING

SENIOR HOUSING

COMMERCIAL OFFICE

MIXED USE

RESTAURANT DESIGN

TENANT IMPROVEMENTS

COMMUNITY DESIGN

HOSPITALITY

GRAPHIC DESIGN



Interior Design

TELL ME A STORY.

From the time we are little kids, we beg our parents, teachers, friends to tell us a story – it’s how we share the past, create the future, and celebrate the present.

For us, interior design is all about telling a story – through space, light, color, and mood, from the curve of a chair leg to the typeface on a sign.

Each piece fits together to weave an experience that challenges, inspires, comforts, or delights, and ultimately invites people back for more.

RESIDENTIAL

HOSPITALITY

COMMERCIAL

RETAIL

RESTAURANT DESIGN

TEST FITS

RETAIL DESIGN

SPACE PLANNING

UNIT PLANNING

ENVIRONMENTAL
GRAPHICS

PROJECT BRANDING

SALES/LEASE CENTERS

MODEL HOMES

FURNISHINGS, FIXTURES
& EQUIPMENT

Meet the team



Bernadette Kelly NCIDQ, LEED AP
INTERIOR DESIGN PRINCIPAL

Interior Design Principal Bernadette Kelly has over 25 years of experience in interior and architectural design for projects all over the U.S. and China. For all of her projects, it is the process and collaborative nature of design that keeps her going, as well as the chance to mentor and collaborate with her team of designers.



Fanny Idoux LEED® Green Assoc.
ASSOCIATE

Designing spaces that evoke specific feelings or create experiences inspires Fanny Idoux. She applies this philosophy and a love of working with space, materials and especially color to hospitality focused architectural and interior design projects.



Monica Knapp
INTERIOR DESIGNER

Monica Knapp is a pro at wielding her favorite tools, Sketchup and Revit. She is able to capture the look and feel of a space through the computer to help her clients envision the end product. Able to usher a project from soup to nuts, she also excels at Construction Administration, seeing WTid’s designs come to life.



Jill Myers NCIDQ, LEED Green Assoc.
INTERIOR DESIGNER

Jill Myers brings an enthusiasm for design and a wide range of hospitality and residential experience to Weber Thompson’s Interior Design team. Her work has included a variety of luxury hotels and casinos around the globe, as well as unique amenity and living spaces in multifamily developments.



Sabina Fiore
TECHNICAL SPECIALIST

Sabina Fiore has over a decade of experience working on residential projects that range from single-family homes to high-rise multifamily units. Her versatile background in both architecture and interior design gives her a unique perspective on how people use the space around them. No design challenge is too big for Sabina. She views each constraint as an opportunity to dream up innovative solutions.



Vy Dang
INTERIOR DESIGN JOB CAPTAIN

With a passion for forging relationships and learning new skills, Vy Dang is a welcome face on any project team. She approaches each new task with gusto and a curious attitude and is willing to jump in with both feet. Vy loves being in nature and draws inspiration from the world around her – the beauty, the cultures, and the people who make life meaningful are her muses.



High-Rise Interior Design

LIVE LIFE IN THE CLOUDS.

Comfortable, beautiful and highly functional spaces are created by keeping the future resident front of mind, and understanding how they live their life – Do they work near by? Enjoy entertaining? Seek a modern way of living?

Solid marketing research and a grounding in spatial relationships represent the depth of thought that goes into making a high-rise unit home, and a highly-polished amenity space an inviting extension of a community.

Weber Thompson's Interior Design Studio has a long history of creating luxurious spaces people want to come home to – whether our architects designed the building or not. Welcome home.



AWARDS

2021 Multifamily Executive Awards, Grand Award Winner
High-Rise Project of the Year

2020 NAIOP Night of the Stars Awards, High-Rise Residential Development of the Year

2020 Gold Nugget Awards Grand Award Winner
Best Multifamily Community – 100 du/acre or more

2017 Gold Nugget Awards Merit Award Winner
Best On the Boards Multifamily Community



Nexus

SEATTLE, WA

Nexus is an iconic, and very forward-thinking 440' residential tower on a site at the northern edge of Downtown Seattle. Bold and dynamic, the tower is based on a concept of stacked and rotated boxes, each of which twists away from its counterpart. The result is one of implied motion – the tower seems to move as one moves around it.

The interior design of Nexus softens the angular architectural with fluid, soothing palettes and natural materials while also incorporating the latest in integrated, high tech systems. The result is a welcoming urban oasis that gives home owners easier control over their environment with the touch of a button.

Every unit features luxurious, yet simple finishes and forms that draw focus to the beauty of the surrounding sprawling views. Units range from studios to penthouses, including a two-story Sky Loft.

One of the more striking features of Nexus is its 100% authentic art program. One of a kind murals, sculptures, and wall art adorn every common space.

440 foot residential tower in
Downtown Seattle

382 residential units

Total gross square footage of
539,688 sf including parking

Above-grade parking podium
features backlit glass fins that
respond to motion of cars

SERVICES

Architecture

Interior Design

Landscape Architecture



Stratus

SEATTLE, WA

In South Lake Union, Seattle's three city grids converge to create a dynamic sub-neighborhood: Denny Triangle. This pocket is home to organic grocers, bars, swanky restaurants, office towers, and urban remnants of the former industrial history of the area. The idea of a prism, which refracts and separates light, takes the concept one step further. The team has woven these concepts into the cohesive backbone threaded through this project's interior spaces.

The two-story lobby features a monumental metal and limestone fireplace, a curving stair to the leasing office and lounge, and a custom sculptural light fixture, creating a focal point from inside and out. The incredible amenity package fills two floors and includes everything from a fitness center to an outdoor soaking pool.

The elegantly neutral color palette includes champagne metal, crema limestone and rift-cut wood, with enlivening bursts of color and pattern on floors, walls, ceilings, and furniture to entice a fashion-forward, design-savvy target market.

AWARDS

2018 NAIOP Night of the Stars
High Rise Residential of the Year

396 Residential units

Upscale, high-end residential building with a hotel-like edge

Unprecedented amenity package fills two entire floors

SERVICES

Architecture
Interior Design
Landscape Architecture



Cirrus

SEATTLE, WA

Connecting residents to Downtown Seattle's retail offerings and culture and South Lake Union's recreation and innovation is a primary focus of Cirrus.

The interior spaces are designed with the South Lake Union professional crowd in mind, offering luxe materials in a neutral palette with splashes of color. Culturally diverse renters in the prime of their careers, residents of Cirrus enjoy cooking, entertaining and socializing; they've got an eye for refined urban style.

Throughout, high-touch materials calm and soothe the senses at the end of a long day at the office or a night on the town. The timeless common spaces and unit finishes make Cirrus an urban home, not a generic rental.

AWARDS

2017 Northwest Design Awards
First Place – Outdoor Living Area

355 units with an average
of 1058 sf per unit

476,000 gsf and 3,714 sf
retail space

LEED Silver Certified

SERVICES

Architecture
Interior Design
Landscape Architecture



Helios

SEATTLE, WA

Helios is all about downtown Seattle living without sacrifice.

Stepping inside, Helios feels more like entering a luxury hotel than an apartment building. Dramatic angles abound, taking cues from the façade's precast concrete panels. No detail has gone unnoticed: unit signage is fabricated of blackened steel, the reception desk is backlit onyx – even the corridors come alive with curated lighting levels and refined artwork.

Building amenities include a fitness and yoga center, theater, dog walk/lounge, and a luxurious hospitality-inspired lobby with retail. Open seating and matte black and copper fixtures in this space add a dramatic yet playful element when juxtaposed against raw concrete columns. The mixed-use lobby is outward-facing; the transparency of this space activates the exterior streetscape as well.

AWARDS

2017 Gold Nugget Awards: Merit Award Winner – Best Multifamily Housing Community (100 du/acre or more)

Ultra-modern 398 unit tower in prime downtown Seattle location

LEED Gold Certified

SERVICES

Architecture*
Interior Design
Landscape Architecture

**A joint venture with GBD Architects*



Mid-Rise Interior Design

Weber Thompson's Interior Design team excels at designing an interior experience that speaks to residents through design elements such as locally reclaimed materials, art from local artists and splashes of color and texture that are rooted in the history of place.

We work closely with the brand and leasing teams to develop a cohesive design story that's threaded through every detail – from the exterior signage to the furniture in the lounge to the finishes in the units. This continuity is what ties a residential community together and ultimately attracts tenants to sign on the dotted line.

Let us help you create a community worth coming home to.



Modera Broadway

SEATTLE, WA

Nestled between energetic Broadway and historic Cal Anderson Park sits Modera Broadway, a mid-rise respite of 228 homes. Inside, residents escape the hustle and bustle of Capitol Hill's urbanity with a soothing ambiance that flows throughout the diptych structure.

Weber Thompson's interior designers drew inspiration from the bordering park, using natural tones and textures, and refined lines to create a relaxed yet sophisticated setting. Materials are rendered in light and dark contrasting tones, playing off each other like the sun and shadows. A palette of beachy blues, whites of crashing waves, and straw-toned oak promote an airy vibe, while black steel details give the peaceful space a modern edge.

Vertical and horizontal planes meet in a finely tuned display of materiality that defines various spaces, from the lobby or the elevator to the lounge or rooftop. Perched atop the building, residents are placed at eye level with the treetops of Cal Anderson Park for a truly nature-inspired home in the city. Residents won't find a more peaceful home in the center of it all.

Iconic location near Capitol Hill Light Rail Station

228 residential units in two 65 ft tall buildings

240,000 gsf overall with 23,500 sf of commercial space

SERVICES

Architecture
Interior Design
Landscape Architecture



The Clay

SEATTLE, WA

Located on the site of Capitol Hill's old Redwood Bar, the interior design of The Clay references some of the vintage nostalgia of the bar with its wood paneling throughout, though updated for a modern look.

The main entry to Clay features a distinctive tile welcome mat and a collection of playful lights spanning the shared lounge space. A collection of geometric wallcoverings make long, potentially monotonous hallways memorable and distinctive.

The third level amenity space was inspired in part by Airstream trailers, with its built-in banquette seating to maximize space and nostalgic, vintage inspired window coverings. The Clay interiors do not shy away from color, enhancing it's fun quirkiness throughout.

Contains 76 SEDUs

Inspired by previous Redwood Bar

Located in the Capitol Hill neighborhood of Seattle

Architecture by Cone Architecture

SERVICES

Interior Design



Broadstone Meta

SEATTLE, WA

The concept for the interiors at Broadstone Meta was inspired by the graphical language of music, with a Pacific Northwest sensibility. The design elements throughout are lyrical and metered with an infusion of materials found here in the PNW.

Like a beautiful piece of classical music, the interiors are elegant and sophisticated, carrying the eye through the space with restraint at times and bold strokes at others. The palette is tastefully subdued, allowing the handful of carefully curated show-stopping elements to take center stage. Soft grays and light wood set a perfect backdrop for the design; the rhythm of the wood slats provide an underlying syncopation throughout the property, while stunning lobby light fixtures celebrate the double-height space.

The amenity spaces were designed to cater to a modern way of working and socializing. With a mix of open yet defined pods and more private focus and collaboration areas, residents are encouraged to use these communal spaces much like they would their own living room.

Contains 294 residential units

Concept inspired by materials found in the Pacific Northwest

Architecture by Encore

SERVICES

Interior Design



Fremont & 9th

LAS VEGAS, NV

In Old Town Las Vegas, the original downtown core, a transformation is taking place. The vision of the late Tony Hsieh, former CEO of Zappos, Downtown Project reimagines this area as a hub of inspiration, entrepreneurial energy, creativity, innovation and discovery.

In the district's heart one particular development solidifies the Downtown Project's success: Fremont & 9th. The largest new residential development to hit Vegas's downtown since the great recession, it provides much needed housing for the people who live and work there.

Weber Thompson Interior Design designed Fremont & 9th's common and amenity areas by taking inspiration from the redevelopment's focus on arts, culture and community.

Graphic patterned carpets and wall coverings, and creatively repurposed materials are used throughout. The common areas are inspired by the creative spirit of the neighborhood – CoreTEN steel and large-scale custom murals echo its arty, gritty vibe.

Large mixed-use multifamily development in Downtown Las Vegas

231 residential units

15,000 sf of retail space along Fremont Street

Architecture by Humphreys & Partners Architects

SERVICES

Interior Design



Orenda

SEATTLE, WA

Located within the Othello Square campus at the corner of South Othello Street and Martin Luther King Way in Seattle, Orenda provides 176 units of workforce housing.

Inspired by the local community’s cultural diversity, the playful, layered and inviting design of Orenda is an elegant balance of modern and artisanal styles. A sunny palette and textile-inspired finishes create pleasant spaces that feel handcrafted. Packed with color, tactile materials and thoughtful design, Orenda feels authentic and welcoming.

The bright color palette continues in the units where two different color schemes are offered. In the kitchens, stylish pendants hang over the quartz countertop where blue or orange upper cabinets tastefully complement the matte black cabinets.

On the first floor, the lobby, community room and fitness room’s colorful patterns, finishes and lights tie the spaces together to create a warm first impression. The rooftop lounge was designed to support flexible uses. The metal screen at the banquette creates an intimate nook in the otherwise open space and provides privacy between the lounge, game room and kitchen.

Part of the four-building Othello Square development

Includes Odessa Brown Children’s Clinic (OBCC) and an early learning childcare facility

176 affordable units ranging from studios – 3-bedrooms

SERVICES

Architecture
Interior Design
Landscape Architecture



The Bravern

BELLEVUE, WA

The Bravern, originally opened in 2010, is an iconic pair of high-end residential towers accompanied by luxury retail shops at the base. Over a decade later, the owners felt it was time to refresh the interiors of the building to a sleeker and more modern feel, while maintaining the high-end luxury aesthetic.

The design team refreshed the residential corridors by incorporating a herringbone textured wallcovering evocative of men's suiting, a painterly custom-designed carpet, and custom lighting at each entry. The theater room was upgraded with architectural millwork, new wallcovering and carpet, modern lighting, custom velvet sofas and armchairs, and a stunning piece of stone on the hospitality bar.

The Great Room, which hosts many private events, was revitalized by adding rich warm wood tones, velvet upholstered armchairs, stone and leather dining furniture, luxurious lighting, fresh finishes in the show kitchen, and hospitality carpet reminiscent of a modernized hotel ballroom.

The residential lobby space in the north tower – which already hosts a fireplace, big-screen TV, and billiards table – will also include a wet bar and additional game table when finished.

455 units

Remodel ongoing – began in 2010

Architecture by CallisonRTKL
and NBBJ

SERVICES

Interior Design



Gunbarrel Center

BOULDER, CO

With fabulous weather and a plethora of outdoor recreation opportunities, Boulder is naturally home to many athletes and outdoor enthusiasts. At the same time, it is a land of fantastic food, delicious craft beers, concert series, festivals, and arts events. This duality is embraced at Gunbarrel Center. Timeless details are both rustic and modern, warm and inviting.

Amenity and common areas at Gunbarrel Center include a large lobby and leasing office, lounge, theater and billiards room, a shared kitchen, and retail spaces. Materials throughout these areas include raw wood, blackened steel, and unique details and fixtures. Large chandeliers hang in the lobby central focal points. At the stairs, an art screen provides visual interest and separates public from private.

AWARDS

2017 Gold Nugget Awards: Merit Award Winner – Best Multifamily Housing Community (18-30 du/acre)

Mixed-use development containing 251 units, amenity spaces, and retail

Architecture by BAR Architects

SERVICES

Interior Design



Sunset Electric

SEATTLE, WA

Expanding on an existing 1926 brick building, Sunset Electric is a mixed-use residential and commercial structure, wrapped around an open courtyard. A monochromatic palette is seen throughout the building with jolts of electric yellow in the lightning bolt mosaic at the back of the lobby, and marking unit doors. The courtyard and roof deck are populated with furniture featuring low, clean lines in an array of grays with pops of yellow. In the lobby a mural made of layered newspaper hearkens to the building’s poster art history.

Wood details strew the building – bedroom barn doors, kitchen shelves, coat hooks and mailroom details – all made locally by Montana Originals from reclaimed wood from the original building. Units are cleanly designed to take maximum advantage of the oversized windows and through unit ventilations, as many of the units have windows on both the outside of the building and on the courtyard. A light colored palette, simple detailing and flexible spaces allow the tenant to furnish the spaces to meet their needs.

AWARDS

2014 NAIOP Night of the Stars
Multifamily Development of the
Year, Midrise

2014 Building of the Year, Daily
Journal of Commerce

92 units with a mix of studio, one-
two-bedrooms, and live-work

650 sf average unit size

Certified LEED Platinum for Homes

SERVICES

Architecture
Interior Design
Landscape Architecture

WEBER THOMPSON | 33



Track 66

SEATTLE, WA

In the quaint Roosevelt district of Seattle, efficiency and micro housing units are popping up like weeds, and for good reason. An influx of international students and tech workers seeking a modern new place to call home are filling units as fast as they can be built. They want a home that's nicer than a dorm room and which offers useful amenities, at an affordable price point. Enter the small efficiency dwelling unit, and the 78-unit multifamily building Track 66.

From the moment one steps into the lobby, it's clear that the building's common spaces are classy and stylish. Plyboo wall coverings and metro map super graphics riff on the design team's concepts of transit, technology, and connectivity – with a splash of retro thrown in for good measure.

Throughout the building, directional patterns and perforations playing with pattern and light tie the spaces together. The upper lounge and media rooms are designed to support flexible uses, and a compact kitchen makes roof-top meals possible year round. Translucent sliding doors separate the spaces to provide privacy between the media room and lounge, making this compact space extremely functional for a variety of uses.

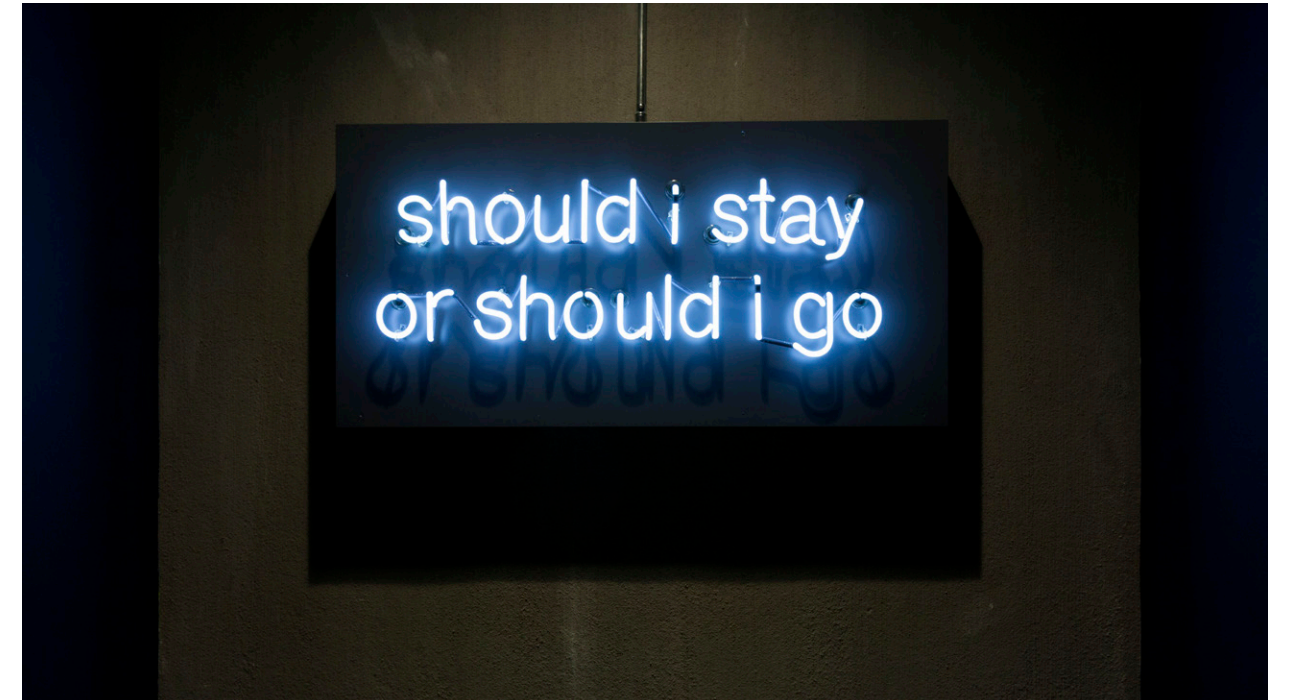
Contains 75 Small Efficiency Dwelling Units (SEDU) and three live work units

Targeted at students looking for an affordable yet upscale home

Amenities include media room, RI Lounge and roof deck

Architecture by Cone Architecture

SERVICES
Interior Design



Pike Motorworks North

SEATTLE, WA

Pike Motorworks offers a high-quality, luxury apartment building with a unique, historic aesthetic to the Pike/Pine district of Capitol Hill. Two buildings, at a total of 15,000 sf, make up this nearly full-block project. A pedestrian corridor runs between and opens up to form a grand, open-air courtyard plaza at the core.

On the ground floor, a collection of eateries, bars, and shops are housed in the original BMW showroom, the facade of which has been maintained to celebrate the building's auto-row era roots. This character structure informs the aesthetic throughout the building.

In the north building, a modern moodiness permeates the common areas and units. Spacious floor plans with reclaimed timber details can be found throughout. Amenities include the use of bold super graphics and historic-inspired materials to create a palette best described as urban grunge. Strategically placed neon signs flash cheeky song lyrics, and bold, abstract artwork completes the finish package meant to appeal to young professionals, entrepreneurs, artists, and other urban dwellers looking for someplace a little bit different to call home.

The north building in a two building, seven level, 243 unit market rate apartment complex

Unit mix includes studio, 1-, 2-, and 3-bedroom units

Approximately 12,000 – 15,000 sf commercial space for retail use

Certified LEED Silver for Homes Midrise

SERVICES

Architecture
Interior Design





Pike Motorworks LTD

SEATTLE, WA

In Seattle's edgiest downtown neighborhood, there are few luxury apartment options. The vibrant area is close to shopping, dining and is an ideal place to call home for those who work in South Lake Union or First Hill. This project is the high-end living solution the neighborhood has been waiting for.

Setting a new standard of luxury, this apartment project features an urban minimalist interior that highlights the work of local and international artists, uses highly curated finishes, and contains spacious units with targeted amenities.

The lobby, with fully staffed concierge desk, features a lavish wool rug set atop a highly polished concrete floor. Reclaimed wood paneling clads a modern fireplace and leather accent tiles adorn accent walls to add a touch of opulence.

Many of the spacious units feature six-piece baths, integrated storage, and casework closets and European kitchens and baths. Custom LED lighting add sparkle and drama to the high-end residences.

Minimalist luxury apartment building in Seattle's urban core

Total of 104 units offered in open, 1-, and 2-bedroom floor plan options

Certified LEED Silver for Homes Midrise

SERVICES

Architecture
Interior Design



4730 California

SEATTLE, WA

West Seattle is all about big city amenities with a small town vibe and that's exactly what residents of 4730 California Avenue get to enjoy. At seven levels, this 88 unit mixed-use building has got it all, but if that's not enough, the surrounding neighborhood offers all a person could want and more.

Our designers found themselves drawn to the concepts of the shoreline while conceptualizing the interiors for this project. They've created the perfect modern nautical-inspired design that never approaches kitschy. Rich textures and natural materials such as reclaimed wood contrast high-shine finishes and other utterly modern details to strike a perfect balance.

Amenities are in no short supply at 4730 California, which includes a fitness room, rooftop deck, and generous lobby, lounge, and gathering spaces. A mid-block pedestrian walkway provides easy access to street-level retail and shops, restaurants, and stores that abound in the immediate neighborhood.

AWARDS

2016 Gold Nugget Awards –
Award of Merit Honoree: Best
Multifamily Housing Community
Over 250 du/acre

Seven stories with 88 units

Amenities include a fitness room,
rooftop deck, lounge,
and gathering spaces

SERVICES

Architecture
Interior Design
Landscape Architecture





Brooklyn 65

SEATTLE, WA

A new wave of modern, efficient apartment homes are hitting the Seattle market. Among them is Brooklyn 65, an urban community that's high on style and easy on the wallet. Brooklyn 65 is located in the heart of Seattle's Roosevelt neighborhood. The six-story project features stylish, efficient dwelling units that maximize small space living. Weber Thompson's Interior Design studio was called in to provide the building's finishes, furniture and other interior flourishes.

From the energetic lobby to the luxe resident lounge spaces, a cohesive thread ties the design together. Even the most efficient unit is bathed in natural light, creating an open airy vibe that also feels comfortable and cozy. Bold colors and geometric shapes are combined with a tailored yet laid-back vibe to make Brooklyn 65 feel truly like home.

6 Stories

20,768 SF Residential

1,027 SF Retail

55 Residential Units

48 Bicycle Parking Stalls

Architecture by Blueprint

SERVICES

Interior Design



Elan Uptown Flats

SEATTLE, WA

A clean, modern design marks Elan Uptown Flats inside and out. A sophisticated material palette including stack bond brick masonry, finely textured fiber-cement panels in neutral colors, and vertically oriented windows are modern twists on the surrounding building fabric. In the lobby, these exterior materials wrap the threshold between outside and in and inform the interior palette.

Elan Uptown Flats incorporates subdued yet rich natural materials and colors such as raw wood, weathered and blackened steel, and neutral earth tones throughout the interior amenities, common spaces and units to evoke the feel of the Pacific Northwest. The building's irregular window pattern creates light-washing effects in bedrooms – making even compact units live large.

182 apartments in two buildings
ranging from studios to
3-bedrooms

14 live/work units

Located in the Uptown
neighborhood of Seattle, a few
blocks from Seattle Center and
the Space Needle

Certified LEED Silver

SERVICES

Architecture
Interior Design
Landscape Architecture



Raven Terrace

SEATTLE, WA

Raven Terrace at Yesler Terrace is the first low-income housing development in the master planned Yesler Terrace neighborhood near downtown Seattle. The building includes 83 new affordable apartments ranging from studio apartments to 4-bedroom townhouses for people of all ages.

Raven Terrace offers residents not only affordable housing, but also amenities that add to the vibrancy of the greater community of Yesler Terrace. The building's community room provides space for up to 100 people and is well equipped with a kitchen, restrooms, and a digital overhead projector to support various functions such as potlucks and social functions.

Equipped with elevators, wheelchair-friendly designs, and "Breathe-Easy" filtration in the heat recovery units, the building offers a fundamental positive impact on the overall quality of health and life for residents. By eliminating carpet in the units, the quality of indoor air has also been significantly improved.

AWARDS

2017 Affordable Housing Finance Awards – People's Choice Award: Best Public Housing Redevelopment

95,000 SF with 83 units total

A mix of apartments, and two, three, and four-bedroom townhouses.

Seattle Housing Authority project with HUD funding

First low-income housing in the Yesler Terrace Master plan neighborhood

SERVICES

Architecture
Interior Design
Landscape Architecture



Retail & Hospitality

OPEN FOR BUSINESS.

We know that opening a new business is exhilarating, but it’s also a quick-moving process that requires keeping a lot of balls in the air. Just as you look to your staff, vendors, and purveyors for their best to get your business off the ground, we’re here to help in our area of expertise – designing a beautiful yet efficient space, navigating local building code requirements, and helping you be true to your story as well as your budget.



Willows Lodge Interior Refresh

WOODINVILLE, WA

Opening in 2000 and located just 25 minutes east of Seattle in Washington’s own version of Napa Valley, Willows Lodge contains 84 well-appointed rooms including seven suites. Oversized soaking tubs and fireplaces come standard in most rooms, and hotel amenities include meeting facilities, a ballroom, two restaurants and a spa.

After 15 years in operation – the hotel was in desperate need of a refresh. Weber Thompson’s interior design team was called in for the job.

Our approach to this project was based on the concept of a lodge with a modern spin. Our design team pulled the design palette from beautiful existing details like the richly stained concrete floor and the Lodge’s huge, rustic-hewn beams. Deep burgundy tones and buttery caramel are paired with warm neutrals to support this design concept. When paired with lavish textures and understated patterns, the design story becomes rich and complex – and the guest experience even more luxurious.

84 key hotel

Located in Woodinville, WA,
a.k.a “Woodinville Wine Country”

Complete interior refresh of
lobby, Fireside Bar, Ballroom,
pre-function spaces, meeting
rooms, guest rooms and suites

Redesign began in 2015; ongoing

SERVICES

Interior Design



The Spa at Willows Lodge

WOODINVILLE, WA

Located just 25 minutes east of Seattle in Woodinville's Wine Country sits the inimitable Willows Lodge. Weber Thompson's Interior Design team was solicited to refresh the property in 2015; the popular Spa was among the spaces to receive a facelift.

Open since 2000, Willows Lodge contains 84 well-appointed rooms including seven suites, meeting facilities, a ballroom, two restaurants and a spa. Heavily frequented by business travelers, families and leisure travelers, the property was in desperate need of a refresh. Like most of the spaces, The Spa at Willows Lodge was clad in yellow-toned woods and outdated finishes and upholstery. Our design team was tasked with giving the spa a modern look while maintaining continuity with the overall architecture and lodge aesthetic.

The extensive spa remodel included a complete space plan overhaul, new wall and floor finishes, and new furniture and lighting. The spa redesign perfectly embodies Pacific Northwest sophistication with its wood tones, cool neutrals, and large format stone-look quartz and crosscut-wood porcelain tile finishes.

Complete redesign of spa entry, relaxation room, service rooms and more

Part of a greater refresh of the entire Willows Lodge property

The Spa redesign was completed in 2020

SERVICES

Interior Design





LizzyKate

KIRKLAND, WA

In 2015, online tea retailer LizzyKate decided it was time to try out a brick and mortar location. They engaged Weber Thompson’s interior design team to help them build out a modern teashop in downtown Kirkland that would be the physical manifestation of their virtual store.

As avid tea lovers, the owners visited numerous teashops over the years. What they typically encounter are either ornate, dim spaces filled with delicate rose-patterned china and lace, or stark white, sterile spaces that make tea more of a science and less of an art. Neither of these philosophies made sense for their shop. LizzyKate is a brand that’s modern and fun with a website that’s simple to navigate. What they wanted was a tidy little teashop filled with bursts of color and whimsy that would put a smile on their patron’s faces.

Our designers worked closely with the owners to realize their vision through a series of brainstorming sessions. The result is a lively fun space with colorful accent lighting, brightly colored tea canisters, swaths of wood to add warmth, dramatic lighting and a drool-worthy chiaroscuro tiled floor.

First physical location for online tea retailer, LizzyKate.com

1,028 sf tenant improvement in existing building in downtown Kirkland

Completed in July, 2016

SERVICES
Interior Design



A la Mode Pies

SEATTLE, WA

It is hard to get much smaller than Chris Porter’s 853 sf pie shop; especially when it houses a pie café, coffee bar and full commercial kitchen. Designing this space became an exercise of how much stuff can fit into a tiny footprint, and still leave room for the hungry hoards.

The result is a small, yet open, airy space with a sense of history; a place that reflects the homey nature of pie, without being campy. A framed wire-glass window wall allows patrons to watch the artisan bakers at work in the theater kitchen, while open transom panels at the top encourages the heady scents of baking pie to envelope the entire space. The designers used durable, timeless materials that evoke a sense of history, but also feel clean and modern: white subway tile, concrete floors, end-grain walnut countertops and tables, period lighting, diamond-pattern wire glass, wood lath textured walls and a hand chalked menu board.

Wherever possible, environmentally responsible choices were made, dovetailing with A la Mode’s commitment to using locally sourced and organic ingredients in their pies.

853 square foot bakery/café space with full commercial kitchen.

SERVICES
Interior Design
Environmental Graphic Design





Commercial Interiors

HAVE A SEAT.

Employees spend an average of 35-45 percent of their waking hours at work. For them to be continuously productive, efficient and healthy, they need a supportive environment. The result trickles down to improved morale, fewer sick days, the ability to attract top talent and ultimately a bigger bottom line.

Weber Thompson's interior designers examine the nature, character and goals of a business to craft a space that works best for their financial needs and the employees' productivity. We have created national award-winning environments that are responsive to the client and meet a business's current and future needs.



Weber Thompson at Watershed

SEATTLE, WA

After over a decade in the innovative Terry Thomas building, Weber Thompson relocated to the award-winning Living Building Pilot Program building, Watershed. The 9,000 SF office is outfitted with red-list free materials, reclaimed elements, neutral colors, an open floor plan, and a variety of meeting spaces to help great ideas thrive.

The office layout is anchored by a central circulation core between the breakroom and the lobby. Five new conference rooms and three smaller focus rooms provide flexible options for meetings, phone calls, and breakout activities. They are clad in materials that support their use – dark navy blue felt and moody task lighting for the focus rooms, maple-slat adorned walls and ceilings in the conference rooms, and a smaller meeting space clad entirely in wood.

Scattered around the perimeter of the open office are areas for sitting or quick one-on-one collaborations, which also provide views of Mt. Rainier, Lake Union, Fremont, and the stormwater-scrubbing bioswales right outside the windows.

9,000 SF Commercial Office
Tenant Improvement

Meets Living Building Challenge
Materials Petal and contributes
to Living Building Pilot energy &
water reduction requirements

All products and materials are
LBC Red List-free or Red List-
compliant

SERVICES

Interior Design

*Weber Thompson was also the Architect
and Landscape Architect for Watershed*





ERW Showroom

SEATTLE, WA

The new office for this lighting and control company is a living lighting lab – the result of a blank warehouse canvas turned into a refreshing office interior that doubles as a world class showcase for their innovative lighting technology.

The entry features a simple backlit logo glowing through a laser cut blackened steel panel, while floating overhead rings of light turn a soaring warehouse entry into a more personable welcome.

Simple pendant lights balance with layered hexagonal suspended ceiling shapes, demarcating the open-office area and acting as an acoustic solution. An inset cube of partial height walls features slot lights creating a dynamic, playful rhythm of light. Hallways to the bathrooms are lit with whimsical angled light beams across the walls and ceiling.

In areas where there is natural light, ERW included products that can add another decorative layer of light to supplement. Walls were held down from the spacious 14ft+ overall ceiling to allow light to extend deeper into the space; these walls also feature openings, glass doors, and relites to draw in light from the rest of the office.

9,900 SF Office

25,410 SF Site

Workstations range from larger L-shaped desks to a benching system with open seats

AWARDS

2021 NAIOPWA Night of the Stars, Retail Development of the Year

SERVICES

Interior Design
Tenant Improvement





Talking Rain Headquarters

PRESTON, WA

Almost every surface in Talking Rain's offices is available in case inspiration strikes. Glass walls double as pseudo white boards, ready for notes; desks have both tackable and white board panels; in the marketing office, a central layout work space for building store displays help hone how the product is marketed. In the conference room, a large, interactive touch screen supports conferencing and brainstorming, while barn doors made of reclaimed wood slide away to reveal a presentation wall.

The offices are carved out of the company's existing warehouse, and act as a palette to inform other Talking Rain offices as they are renovated. The aesthetic is a highly industrial flavor with exposed concrete floors, an open web joist structure and reclaimed wood coexisting with translucent elements evoking the freshness of the brand. Focal points such as the decorative light fixture in the Research & Development area recall a cascade of water drops – talking rain, if you will.

7,684 gsf office space for a local beverage company

Desks commissioned locally from Watson Furniture

Offices carved out of existing warehouse space

SERVICES

Interior Design



Team Resumes



THE WOODS





Bernadette Kelly NCIDQ, LEED AP

INTERIOR DESIGN PRINCIPAL



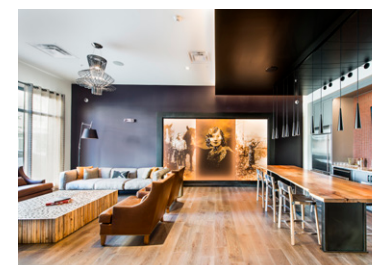
Weber Thompson at Watershed



Nexus



Helios



Gunbarrel Center

Bernadette Kelly leads Weber Thompson's Interior Design team. She has over 25 years of experience in space planning, mixed-use commercial and residential environments. Restaurants and hospitality design top her list of favorite project types. For these projects, she believes there is more of a process in understanding who it is one is designing for, and seeing the importance of both aesthetics and functionality. For Bernadette, that process of analysis, problem solving, and collaboration is one of the most enjoyable aspects of her job.

EDUCATION

Bachelor of Science, Architecture – Portland State University

PROJECTS

Nexus | Seattle, WA

Weber Thompson at Watershed | Seattle, WA

ERW Showroom | Seattle, WA

9North | Seattle, WA

Victory at the U | Seattle, WA

Accolade | Seattle, WA

Helios | Seattle, WA

Stratus | Seattle, WA

Cirrus | Seattle, WA

Fremont & 9th | Las Vegas, NV

Sunset Electric | Seattle, WA

Pike Motorworks North | Seattle, WA

Radius SLU | Seattle, WA

Le Caviste | Seattle, WA

4730 California | Seattle, WA

Pike Motorworks LTD | Seattle, WA

Gunbarrel Center | Boulder, CO

Fanny Idoux LEED Green Assoc.

ASSOCIATE, INTERIOR DESIGNER



The Spa at Willows Lodge



Stratus



Gunbarrel Center



Helios

Designing spaces that evoke specific feelings or create experiences inspires Fanny. She applies this philosophy and a love of working with space, materials and especially color to hospitality focused architectural and interior design projects.

Fanny spent three years working at a hospitality focused firm where she contributed to the award-winning designs of hotels in the US and abroad. She is working on several hospitality projects at Weber Thompson, while also lending her stellar skills to a high end residential high rise.

EDUCATION

Bachelor of Arts in English – Université de Provence

Bachelor of Fine Arts in Interior Design – The Art Institute of Seattle

PROJECTS

Gunbarrel Center | Boulder, CO

Stratus | Seattle, WA

Willows Lodge Refresh | Woodinville, WA

The Spa at Willows Lodge | Woodinville, WA

The Bravern Refresh | Bellevue, WA

Helios | Seattle, WA

Potala Tower | Seattle, WA

L.A. Live Marriott* | Los Angeles, CA

Marriott Courtyard 6th Avenue* | San Diego, CA

Axis Embassy Suites by Hilton* | Seattle, WA

Nanjing Clubhouse* | Nanjing, China

Marriott Courtyard Fort Lauderdale East* | Fort Lauderdale, FL

Renaissance Shenyang* | Shenyang, China

AVA Back Bay Boston* | Boston, MA

AVA Mission Bay* | San Diego, CA

**designed while at Degen and Degen.*

Jill Myers NCIDQ, LEED® AP ID+C

INTERIOR DESIGNER



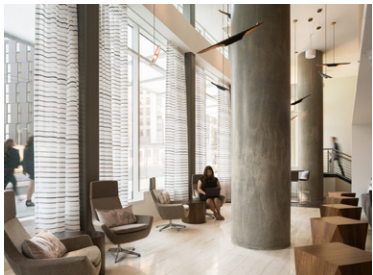
Modera Broadway



Trailside Student Living



Elan Uptown Flats



Helios

Jill Myers brings an enthusiasm for design and a wide range of hospitality and residential experience to Weber Thompson’s Interior Design team. Her work has included a variety of luxury hotels and casinos around the globe, as well as unique amenity and living spaces in multifamily developments. In addition to drawing on her creative design strategies, Jill employs strong project management skills on every project she works on.

EDUCATION

BA in Interior Design – Washington State University

PROJECTS

Fremont & 9th | Las Vegas, NV

Modera Broadway | Seattle, WA

Elan Uptown Flats | Seattle, WA

Trailside Student Living | Seattle, WA

Helios | Seattle, WA

The Whittaker | Seattle, WA

Hyde Square Apartments* | Bellevue WA

Goodman Real Estate: Newcastle, Green Lake,
Northgate, Bothell multifamily projects | Seattle, WA*

Embassy Suites Pioneer Square | Seattle, WA**

Avalon Studio City Renovation | Los Angeles, CA**

AVA Studio City Renovation | Los Angeles, CA**

AvalonBay AVA H Street | Washington DC**

**Project designer / project manager while at Robin Chell Design*

***Project designer / project manager while at Degen & Degen*



WEBER THOMPSON

Thank You.

BERNADETTE KELLY
bkelly@weberthompson.com
206-344-5700

WWW.WEBERTHOMPSON.COM