



WEBER THOMPSON

Workplaces
DESIGN STUDIO



ABOUT

Our Firm

Founded in 1988, Weber Thompson is an award-winning architecture, interior design, landscape architecture and sustainable design firm. We have architects, space planners, interior designers, LEED APs, landscape architects and construction specialists. We even have an MBA.

Our dynamic, integrated design practice is led by curious people who challenge conventional wisdom, lead with integrity, and design with guts. We integrate our disciplines and underscore them with strong technical experience, a commitment to sustainability and a heartfelt dedication to creating spaces that serve their future users and operators.

“Their strong relationship skills mean they ‘act as a team’ at all times through every project.”

– Weber Thompson Client

COMMERCIAL OFFICE

TENANT IMPROVEMENTS

MULTIFAMILY RESIDENTIAL

AFFORDABLE HOUSING

SUSTAINABLE DESIGN

HIGH RISE

STUDENT HOUSING

SENIOR HOUSING

MIXED USE

RESTAURANT DESIGN

COMMUNITY DESIGN

HOSPITALITY

GRAPHIC DESIGN





Our Approach

HEALTHY ENVIRONMENTS = HEALTHY WORKERS

High performance office design includes everything from human health and wellness to a connection to the natural world and positive influence beyond our project site.

What's good for the employees is also be good for the bottom line. Work environments have a major impact on employees' health, productivity and over all morale.





Sustainable Design

High performance office design includes everything from human health and wellness to increased productivity to a connection to the natural world and influencing beyond our project site.

We believe that good design includes green building practices – integrating disciplines that create spaces that are good for the environment and community, and essential to the health and well being of users. They are also easier to market, more efficient to operate and help “green” the bottom line.

2021 Built Green Hammer Award,
Builder, Large Multifamily, over 150
units

2020 NAIOP Sustainable Office
Development of the year
(Watershed)

Architecture @ Zero UCSF Net
Zero Student Housing Project Honor
Award recipient

2021 Architizer+ Awards,
Architecture + Water (Watershed)

Recipient of the 2017 Vision Award
for Water at the 2030 District Vision
Awards (DATA I)

United States Green Building Council
organizational member

Seattle 2030 District professional
stakeholder member

AIA 2030 Commitment signatory

Certifications we have experience with:

- Living Building Challenge
- Salmon-Safe
- FitWel
- Passive Haus
- LEED NC, CS, CI, ND, Homes



MEET OUR

Workplaces Team

We bring you a collaborative group; not just restricted to the headshots on the next page. WT believes in cross pollination of knowledge and skills. You have the entire firm at your back.



Kristen Scott AIA, LEED® AP

SENIOR PRINCIPAL

Senior Principal Kristen Scott oversees Weber Thompson's integrated Workplaces Design Studio leading teams designing award winning high performance office buildings including the Living Building Pilot projects Watershed and Living Stone, the LEED Gold DATA I and several mass timber office and lab ready buildings.



Myer Harrell AIA, LFA, LEED® AP BD+C, Homes

PRINCIPAL, DIRECTOR OF SUSTAINABILITY

Principal Myer Harrell is known throughout Seattle as a thoughtful, dedicated architect with a passion for smart sustainable design. As Weber Thompson's Director of Sustainability, Myer oversees sustainable education and initiatives throughout the office. He also manages high performance projects within the Workplace Design Studio.



Cody Lodi AIA, LEED® AP

PRINCIPAL

Cody has a deep portfolio of rigorous design and a careful attention to execution with a focus on mass timber construction and high performance buildings, such as those pursuing Living Building certification. He is passionate about sustainable, functional design and infuses his work with these principles. He leads WT's design initiatives such as the Design Origins program which facilitates design discussions on every project.



Bernadette Kelly NCIDQ, LEED AP

INTERIOR DESIGN PRINCIPAL

Bernadette Kelly leads Weber Thompson's Interior Design Studio. She has over twenty years of experience in space planning, mixed-use commercial and residential environments. For her and her team's projects, they balance the proforma needs of the employer and landlord with the design strategies proven to create spaces that maximize employee well being.



Rachael Meyer PLA, GRP, LEED® AP, LFA

LANDSCAPE ARCHITECTURE PRINCIPAL

Rachael Meyer oversees WT's Landscape Architecture Team harnessing decades of design experience. She is a passionate about the user experience, and works to shape outdoor spaces to be extensions of the workplace. She has extensive knowledge of green roofs, and developing innovative stormwater and sustainable strategies and integrates these into each of her designs.



ABOUT OUR

Workplace Experience

Each project moves the needle farther. Starting with the passively cooled, nationally recognized LEED GOLD Terry Thomas, then Data 1 and it's pioneering bioswales that cleaned salmon-killing runoff. Living Buildings Watershed and Living Stone followed quickly, as did Cedar Speedster, 3800 Latona and their mass timber structures.

We harness appropriate time tested strategies and emerging technologies to realize our clients' sustainable visions. The perception is that building sustainable offices are too hard. Too expensive. Through our projects we have proven that, with the right team, those fears are unfounded. And that the payoff is worth it.



AWARDS

*2021 Award of Merit, Office/Retail
ENRW Northwest Regional Best
Projects*

*2021 Popular Choice Award,
Concept > Architecture + Water
Architizer A+ Award*

*2021 Merit Award, \$15
million to \$75 million
AISC Innovative Design in
Engineering and Architecture
with Structural Steel (IDEAS²)*

*2020 Sustainable Office
Development of the Year
NAIOPWA Night of the Stars*

*2020 Building of the Year, Runner-
Up Seattle Daily Journal of
Commerce*



Watershed

SEATTLE, WA

Under Seattle's Living Building Pilot, this commercial office building in the Fremont neighborhood is visionary in its material selection, response to the environment, and urban context with supplemental energy, water, and stormwater reduction targets.

The project's two frontages include vibrant pedestrian environments as well as treatment of over 300,000 gallons of stormwater from the historic Aurora Bridge in stepped bioretention plantings. Metal details trace the pathway of stormwater and steel blade signage describes the story of water on the site.

This project links the core of Fremont with the quickly expanding Stone Way developments and reinforces the neighborhood's collection of high performance buildings.

7-story, 67,000 SF office building

5,300 SF of retail at grade

Living building Pilot project pursuing Materials, Place and Beauty Petals

Uses 75% less water than typical building by capturing rainwater and using efficient fixtures

Salmon Safe Certified

SERVICES

Architecture

Landscape Architecture

Environmental Graphic Design

The New York Times

Watershed was featured in the New York Times on July 14th, 2020

ARTICLE (EXCERPT):

Going 'Deep Green,' Office Buildings Give Back to the Planet

As technology costs have declined, more developers are creating buildings that can benefit the Earth by tackling pollution and save money by producing their own power.



The Watershed building, next to the Aurora Bridge in Seattle, has a slanted roof that collects rainwater.

One of the latest projects of this type is Watershed, a seven-story office building in the Fremont neighborhood of Seattle that was completed this year and is now three-quarters leased. Watershed has a slanted roof that collects rainwater for use in toilets and a wide, welcoming entry staircase offering an alternative to the elevator.

The project's developers, Stephen C. Grey & Associates and Hess Callahan Partners, credit their architects at Weber Thompson with pushing them to go green with this project and previous ones.

The team first collaborated on a four-story office building in Seattle designed with "passive"

heating and cooling, meaning sunlight coming in through glass walls warms up interiors and provides natural illumination and operable windows offer ventilation, eliminating the need for central air-conditioning. Opened in 2008, the building leased quickly and has remained fully occupied.

"We just figured the time was right, the site was right, and the market was right."

Its success "convinced us to do more of it," said Mark Grey, principal of Stephen C. Grey.

The team then raised the stakes with an office project alongside the Aurora Bridge in Seattle. The building has, among other



Bioswales outside Watershed filter polluted water coming off the Aurora Bridge before it reaches a nearby lake.

features, a locker room for 250 bikes. Outside, a planted channel called a bioswale was designed to filter polluted storm water that gushes from a downspout on the bridge to a nearby lake where salmon swim.

Watershed, on the other side of the bridge, has several bioswales capturing the runoff from two downspouts as well as from an alley. Signage amid the landscaping explains how the

dirty water is cleaned before it is fed into the lake. The bioswales added about \$250,000 to the budget for the building, Weber Thompson said.

The building's sustainability features "have real, functional utility," said John S. Grassi, chief executive of Spear Street Capital, a San Francisco real estate company that joined the Watershed project as co-developer.

"We just figured the time was right, the site was right, and the market was right," he added.

Read the whole article at www.nytimes.com/2020/07/14/business/deep-green-office-building.html





Weber Thompson Tenant Improvement at Watershed

SEATTLE, WA

After over a decade in the innovative Terry Thomas building, Weber Thompson relocated to the award-winning Living Building Pilot Program building, Watershed. The new 9,000 SF office is outfitted with red-list free materials, reclaimed elements, an open floor plan, and a variety of meeting spaces to help great ideas thrive.

The office layout is anchored by a central circulation core between the breakroom and the lobby. Five new conference rooms and two smaller focus rooms provide flexible options for meetings, phone calls, and breakout activities. They are clad in materials that support their use – dark navy blue felt and moody task lighting for the focus rooms, maple-slat adorned walls and ceilings in the conference rooms, and a smaller meeting space clad entirely in wood.

Scattered around the perimeter of the open office are areas for sitting or quick one-on-one collaborations, which also provide views of Mt. Rainier, Lake Union, Fremont, and the stormwater-scrubbing bioswales right outside the windows.

Three-star Fitwel Certified

Meets Living Building Challenge Materials Petal and contributes to Living Building Pilot energy & water reduction requirements

All products and materials are LBC Red List-free or Red List-compliant

SERVICES

Interior Design

Weber Thompson was also the Architect and Landscape Architect for Watershed



AWARDS

*Grand Award Winner: Best
Landscape Architecture for a
Community*
2019 Gold Nugget Awards

General Design, Private Ownership
2018 WASLA Awards

Office Development of the Year
2017 NAIOP Night of the Stars

Vision Award for Water
2017 Seattle 2030 District's
Vision Award Winner



Data 1

SEATTLE, WA

Weber Thompson was approached to design a highly sustainable office project in Seattle's self-proclaimed 'Center of the Universe.' The site and program offered many opportunities to create a handsome building that embraces high performance building design.

With a strong east-west orientation, the site is ideal for passive solar design. Achieving LEED Core & Shell Gold certification, Data 1 is designed to reduce energy 30% below a baseline building. Form strategies include a large interior courtyard and extensive glazing for natural daylighting with sensor controlled interior lighting. In addition, a highly efficient, flexible HVAC system and operable windows maximize individual environmental control.

Natural materials, human scale and texture give this high performance office building personality and warmth to fit easily into the quirky quilt-work of Fremont.

More than 11,850 sf of ground-floor retail and 113,000 sf of commercial office space

Contains bike lockers with storage for 200 bicycles on site

LEED Gold certified for core & shell

Salmon Safe Certified

SERVICES

Architecture

Landscape Architecture



744



DATA | LANDSCAPE – CLEANING SEATTLE’S WATERWAYS

Along the east edge of the project site, the Aurora Bridge empties stormwater runoff directly onto Troll Avenue. This water typically flows downhill into dedicated storm drains that discharge into Lake Union without ever being treated. Now, the runoff is redirected into a series of deep bioretention cells running alongside the building. These planters are densely planted with vegetation that naturally scrubs stormwater, allowing dissolved pollutants to settle before the water – much cleaner than before – is diverted back into Lake Union.

Adjacent to these planters, a stair climb and new sidewalk use signage to educate the public about this voluntary altruistic feature and leads pedestrians up the slope of Troll Avenue, a frequent path for neighbors and tourists climbing to see the Troll sculpture dwelling beneath the bridge.

Incorporates art and historic elements, including a piece of the historic Berlin wall

A series of bioretention cells treat stormwater before returning it to the waterway that connects to Lake Union

Project is Salmon-Safe certified



Phinney Ave N 4000



Cedar Speedster

SEATTLE, WA

Cedar Speedster is a mass timber building that began as an underdeveloped site with a valuable asset: Chef Rachel Yang and Seif Chirchi's local culinary hot spot, Revel (and back bar Quoin). Occupying a worn and weathered steel building that had many previous lives, it was in serious need of an update. From this a vision was born: Create a new mixed-use office building and micro-community while reintroducing a refreshed Revel.

Energy modeling and the site's unique geometry sculpted the building mass. Glare and heat gain issues were mitigated by fine tuning building glazing. Exterior terraces were carved out of the west facing façade to create opportunities for stormwater mitigation while providing valuable outdoor space for Revel.

Strategically placed operable windows increase natural ventilation and provide a sensory connection to the vibrant surroundings of Fremont. The warmth of the timber frame structure adds a warm glow that further enhances the experience of working in or visiting the building.

Three-story mass timber building in Seattle's Fremont neighborhood

22,000 sf of commercial office with 10,000 sf of underground parking

5,000 sf retail, 2,100 sf of which is occupied by Revel

AWARDS

Award of Regional Excellence
2021 U.S. Wood Design Awards

SERVICES

Architecture
Interior Design for Revel
Landscape Architecture

AWARDS

*2010 First Place, New Commercial
Buildings Category*
ASHRAE Technology Award

2009 First Place
ASHRAE Society Level Technology
Award, Commercial Buildings

*2009 AIA Northwest & Pacific
Region Design Honor Award*

2009 AIA Seattle
What Makes it Green? Award

*2009 AIA National COTE Top Ten
Green Projects Award*

*2009 The Terry Thomas – LEED
Gold Certified for Core and Shell*

*2009 Weber Thompson Offices
within The Terry Thomas – LEED
Platinum Certified for Commercial
Interiors*

*2008 Sustainable Development of
the Year, Washington State NAIOP*

*2008 AIA Seattle Honor Award
Commendation*

*2008 Third Place, Evergreen
Awards, Ecommercial Category,
Eco-Structure Magazine*





The Terry Thomas

SEATTLE, WA

The Terry Thomas is a highly sustainable, LEED Gold certified commercial building located in Seattle's South Lake Union neighborhood. Wrapped in windows, it is a building designed along a modern aesthetic with a combination of time-tested strategies from the pre-HVAC era and complementary new technologies.

The design choices made for The Terry Thomas reflect changing attitudes about the environment, climate change and employee well-being. The building reduces its carbon footprint with no air conditioning, reduced lighting, a feature stair that encourages use, and a single elevator. The passive cooling system features operable windows, automated louvers and a courtyard. Warm air is drawn into the central courtyard, which acts as a chimney, sending it skyward. Glass sunshades, exterior automated blinds, and a reflective roof protects occupants from solar heat gain. Designing to optimize the natural ventilation went hand in hand with enabling natural light to penetrate the building, dramatically reducing the need for electrical lighting. Both strongly contribute to occupants' well-being, satisfaction and productivity – part of The Terry Thomas's original vision.

A four story, 40,000 sf commercial building with castellated steel and concrete construction

Saves 45-50% water usage through storm water drainage system, efficient plumbing fixtures and waterless urinals

30% energy savings over typical commercial office through efficient hydronic heating, efficient equipment, electronically controlled lighting, ample daylighting, high windows, and white reflectant ceilings and interior surfaces





Living Stone

SEATTLE, WA

Living Stone is a mass timber office building that is pursuing the Seattle Living Building Pilot Program (LBPP) for height and area incentives. The project incorporates a robust rainwater catchment program, using an on-site 178-panel 100kW photovoltaic (PV) array and creative building efficiencies to meet the strict LBPP energy reductions. It sets a precedent for what a healthy, sustainable office building can be.

The project features a lively streetscape with active retail and a Pacific Northwest modern aesthetic thanks to the building's timber frame. The design team was inspired by the patina of industrial structures in the area and wanted to create a modern expression of these forms.

The project seeks to enhance the vibrant Wallingford and Fremont neighborhoods and the larger environment, and it's not shy about it. Interactive dashboards in the lobby display project metrics toward water, energy and carbon goals. Educational signage describes landscape elements, and interpretive 'benchmark' artwork in the entry courtyard explains and expresses the building's performance.

Living Building Pilot Project
pursuing Materials, Place and
Beauty Petals

Five-story commercial office
building with 115,000 sf office
use, 8,000 sf of retail use

250,000 gallon cistern to collect
rainwater for onsite reuse

More than 25% reduction in
energy usage based upon 2015
code compliant office building

SERVICES
Architecture





3800 Latona

SEATTLE, WA

3800 Latona is a mass timber warehouse life sciences lab-ready commercial office building in Seattle's Wallingford neighborhood. The project team was inspired by the site's pre-industrial history as an old growth forest on the shores of Lake Union, and its long-standing history as a lumber yard utilizing the railroad that is now the Burke-Gilman Trail.

During concept ideation the project team explored the qualities of timber and the ways it can be shaped and how to celebrate the building's ties to the lumber industry. The preferred concept of mortise & tenon – a strong woodworking joint for connecting two pieces of perpendicular wood together – drove the design.

The use of 3D printers and crafted virtual reality experiences allowed the team to quickly explore design options and evaluate how they best fulfill the project goals. The ability to view the printed model from an external perspective, while being able to transport inside for internal VR experiences, creates a holistic image of what the architecture is to become.

Five story lab-ready commercial office building pursuing LEED Gold certification

165,000 sf lab/office, 23,800 sf warehouse, 9,000 sf retail

Public plaza and Regional Stormwater facility

Cross Laminated Timber (CLT) and concrete

SERVICES

Architecture

Landscape Architecture





9North

SEATTLE, WA

Situated in the core of South Lake Union, the lab-ready office building 9North sets itself apart with a convergence of the natural and built environments in a bustling urban setting. Along with a large, shared rooftop amenity, every floor has additional decks and terraces, providing tenants a direct connection to fresh air. A stepped setback on Thomas Street – a city-designated green street – creates room for vegetation and retail terrace, forging open space that the public and building tenants can enjoy.

The skin of the building pulls inspiration from the natural process of erosion, a powerful force driven in the Pacific Northwest by glaciers, rivers, and oceans that carve away at the landscape beneath. 9North's northern façade is "eroded" away with stepping decks that wrap around each corner. The façade's transparency is dynamic, based on a gradient, increasing in density towards the south as it reaches the property line. Composite wood soffits contrast with the extensive glass and highlight shifts in massing, while stone plinths and fiber cement panels provide natural texture.

Eight stories (including rooftop)

115,000 sf life science lab ready
office space 995 SF retail

Pursuing LEED Gold certification

82 bicycle parking stalls in a
dedicated facility

outdoor space on every level,
7,600 SF exterior tenant space

SERVICES

Architecture
Interior Design
Landscape Architecture





ERW Showroom

SEATTLE, WA

The new office for this lighting and control company is a living lighting lab – the result of a blank warehouse canvas turned into a refreshing office interior that doubles as a world class showcase for their innovative lighting technology.

The entry features a simple backlit logo glowing through a laser cut blackened steel panel, while floating overhead rings of light turn a soaring warehouse entry into a more personable welcome.

Simple pendant lights balance with layered hexagonal suspended ceiling shapes, demarcating the open-office area and acting as an acoustic solution. An inset cube of partial height walls features slot lights creating a dynamic, playful rhythm of light. Hallways to the bathrooms are lit with whimsical angled light beams across the walls and ceiling.

In areas where there is natural light, ERW included products that can add another decorative layer of light to supplement. Walls were held down from the spacious 14ft+ overall ceiling to allow light to extend deeper into the space; these walls also feature openings, glass doors, and relites to draw in light from the rest of the office.

9,900 SF Office

Workstations range from larger L-shaped desks to a benching system with open seats

AWARDS

2021 NAIOPWA Night of the Stars, Retail Development of the Year

SERVICES

Interior Design
Tenant Improvement



WORKPLACES TEAM

Resumes



Kristen Scott AIA, LEED AP

SENIOR PRINCIPAL



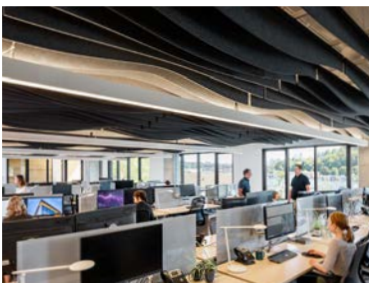
Data I



Data I Courtyard



Watershed – a Living Building Pilot Project



Weber Thompson at Watershed

Kristen Scott is Managing Partner and Senior Principal of Weber Thompson where she heads the workplace design studio. As Managing Partner of Weber Thompson for more than 20 years, she has overseen the growth of the firm from its beginnings to the sustainably focused 70 person multi-disciplinary firm it is today. Her background spans the design of a variety of affordable and market-rate homes, multifamily and senior housing in both urban and suburban communities to currently leading teams designing high performance office buildings.

Kristen received her Master of Architecture and a Bachelor of Arts in Psychology from the University of Washington, a background which provides a foundation for her collaborative, solution oriented approach to design. She is licensed to practice architecture in the State of Washington and became a LEED AP in 2007.

Active in the broader architecture community, she held various professional organization leadership roles in Seattle and at the state level including AIA Seattle President. She is a trustee for the University of Washington's Henry Art Gallery.

SELECT EXPERIENCE

Watershed | Seattle, WA

Pursuing Living Building Challenge Petal Certification, Materials Petal
Architizer A+ Award | 2021
AISC IDEAS² Merritt Award | 2021
Fitwell 3-star certification | 2021
NAIOP Sustainable Office Development of the Year | 2020

Data I | Seattle, WA

Certified LEED Gold for Core & Shell
NAIOP Office Development of the Year | 2017
2030 District Vision Award | 2017

9North | Seattle, WA

Pursuing LEED Gold

3800 Latona | Seattle, WA

Pursuing LEED Gold
Deep Green Mass Timber Project | In Design

Living Stone | Seattle, WA

Pursuing Living Building Challenge Petal Certification Mass Timber Office Building

Cedar Speedster | Seattle, WA

Mass Timber Office Building
WoodWroks Award of Regional Excellence | 2021

UTC State Headquarters | Lacey, WA

NAIOP Judges' Innovation Award, Vision | 2019
Excellence in Masonry Awards First Place – Modernization/Renovation | 2019



Cedar Speedster



Living Stone



3800 Latona



3800 Latona



9North

SELECT EXPERIENCE CONT.

Terry Thomas | Seattle, WA

Certified LEED Gold for Core & Shell, LEED Platinum for Interiors

Weber Thompson Offices at Watershed | Seattle, WA

Pursuing Living Building Challenge Petal Certification, Materials Petal

Three-star Fitwel certified

ARTICLES, INTERVIEWS & PRESENTATIONS

Why every new office should be a Living Building. Daily Journal of Commerce, 2021

An Architecture Firm Dedicated to Green Building Felt the Heat & Got AC At the Office: They Still Cut Their Energy Use. KUOW Interview, 2021

Editor's Note: A Gang of Green Seattle Business Magazine, 2021

The Center of the Green Building Universe Seattle Business Magazine, 2021

Going 'deep green,' office buildings give back to the planet The New York Times, 2020

Architects to Watch: Kristen Scott, Green Building & Design Magazine, 2019

Don't question the value of green design – bank on it, Daily Journal of Commerce, 2017

This firm built its Seattle Headquarters without air conditioning to prove a point, KUOW Seattle, 2018

Surviving the summer without A/C, WBUR Boston, 2018

Officially underway project in Fremont highlights change in an Evolving Seattle Neighborhood, The Registry Puget Sound, 2018

The Center of the Green Building Universe, Seattle Business Magazine, 2018

The Changing Face of Fremont Office, CREW Tour, 2018

PROFESSIONAL COMMUNITY SERVICE

AIA Seattle Board of Directors | 2000-2005

AIA President | 2003-2004

Seattle Architecture Foundation Board Member | 2004-2005

AIA Washington Board Member | 2004-2005

Founder, Art In Craft Arts Group | 2009-present

Board of Trustees, Henry Art Gallery, University of Washington | 2019-present

Myer Harrell AIA, LFA, LEED AP BD+C, Homes

PRINCIPAL, DIRECTOR OF SUSTAINABILITY



Data I

Myer Harrell is a Principal and Director of Sustainability at Weber Thompson. He believes in the power of design to promote a sustainable future and manages the firm's initiatives to that end.

He received the AIA Young Architects Award in 2021. Myer was also named a 2011 AIA Seattle Young Architect, and currently serves as president of the AIA Seattle Board of Directors. Nationally, Myer was active in the USGBC Greenbuild Program Working Group and Education Events Committee, and sat on the Board of Directors for Cascadia Green Building Council.

Since 2014, Myer has been project manager for boutique-scale, high performance commercial office construction. He project managed the Data I, a LEED Gold Certified building, and Watershed, which achieved the Living Building Petal certification.

EDUCATION

Master of Architecture – University of Washington

Bachelor of Science Architecture, Philosophy Citation – University of Maryland

PROJECT EXPERIENCE

Watershed | Seattle, WA

Pursuing Living Building Challenge Petal Certification, Materials Petal

Architizer A+ Award | 2021

AISC IDEAS² Merrit Award | 2021

NAIOP Sustainable Office Development of the Year | 2020

Seattle DJC Building of the Year Runner-Up | 2020



Watershed – a Living Building Pilot Project

Data I | Seattle, WA

Certified LEED Gold for Core & Shell

NAIOP Office Development of the Year | 2017

2030 District Vision Award | 2017



Living Stone – a Living Building Pilot Project

9North | Seattle, WA

Pursuing LEED Gold

3800 Latona | Seattle, WA

Pursuing LEED Platinum

Mass Timber Project | In Design

Living Stone | Seattle, WA

Pursuing Living Building Challenge Petal Certification

Mass Timber Office Building



PROJECT EXPERIENCE CONT.

Weber Thompson Offices at Watershed | Seattle, WA

Pursuing Living Building Challenge Petal Certification, Materials Petal
Three-star Fitwel certified

Office of the Future | Various Locations

Eco•Laboratory | Seattle, WA

ARTICLES

Editor's Note: A Gang of Green Seattle Business Magazine, 2021

The Center of the Green Building Universe Seattle Business Magazine, 2021

Going 'deep green,' office buildings give back to the planet The New York Times, 2020

The future of buildings already exists, Renovate, Retrofit, Reuse, 2019

Sustainable satellites: Saviors of our cities? Daily Journal of Commerce Urban Development issue, 2020

10 years later: Weber Thompson's HQ is better with nature Seattle DJC, 2018

Is Seattle's Living Building Pilot Program ready to take off? Seattle DJC (w/ Andrew Lee), 2017

A Q&A: Weber Thompson's Sustainability Director Myer Harrell The Registry 2017

How do you measure the value of a green building? Seattle DJC, 2015



9North



3800 Latona

Cody Lodi AIA, LEED AP

PRINCIPAL



Watershed – a Living Building Pilot Project



Weber Thompson at Watershed



Living Stone – a Living Building Pilot Project

Cody Lodi has a deep portfolio of thoughtful design and a careful attention to execution with a focus on mass timber construction and high performance buildings, such as those pursuing Living Building certification. He is passionate about sustainable, functional design and infuses his work with these principles. He leads WT's design initiatives such as the Design Origins program which facilitates design discussions on every project.

Early experience working in the construction industry gave Cody an appreciation for the craftsmanship that goes into constructing a building, and a greater depth of knowledge as to how a building comes together. He has applied this to his architectural designs, striving to achieve a balance of design and constructability in each of his projects.

EDUCATION

Bachelor of Science in Architecture – University of Idaho

Master of Architecture – University of Washington

PROJECT EXPERIENCE

Watershed | Seattle, WA

Pursuing Living Building Challenge Petal Certification, Materials Petal

Architizer A+ Award | 2021

AISC IDEAS² Merrit Award | 2021

NAIOP Sustainable Office Development of the Year | 2020

Seattle DJC Building of the Year Runner-Up | 2020

9North | Seattle, WA

Pursuing LEED Gold

3800 Latona | Seattle, WA

Pursuing LEED Platinum

Deep Green Mass Timber Project | In Design

Living Stone | Seattle, WA

Pursuing Living Building Challenge Petal Certification

Mass Timber Office Building

Cedar Speedster | Seattle, WA

Mass Timber Office Building

Weber Thompson Offices at Watershed | Seattle, WA

Pursuing Living Building Challenge Petal Certification, Materials Petal

Three-star Fitwel certified



3800 Latona



Cedar Speedster



Cedar Speedster

PROJECT EXPERIENCE CONT.

570 Mercer | Seattle, WA

Revel Restaurant 2.0 | Seattle, WA

Helios | Seattle, WA

ELAN Uptown Flats | Seattle, WA

UCSF Mission Bay Net-Zero Student Housing | San Francisco, WA

SafeCo Tower TI | Seattle, WA*

**designed while at Gensler Architects*

ARTICLES

Editor's Note: A Gang of Green Seattle Business Magazine, 2021

The Center of the Green Building Universe Seattle Business Magazine, 2021

Going 'deep green,' office buildings give back to the planet The New York Times, 2020

Mass timber is bringing the warmth of wood to the workplace. Daily Journal of Commerce, 2019

Bernadette Kelly LEED AP, NCIDQ

INTERIOR DESIGN PRINCIPAL



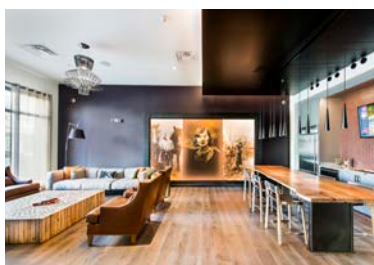
Stratus



Weber Thompson Office at Watershed



ERW Workplace



Gunbarrel Center

Bernadette Kelly leads Weber Thompson's Interior Design team. She has nearly twenty-five years of design experience in space planning, mixed-use commercial and residential environments. For these projects, she believes there is more of a process in understanding who it is one is designing for and seeing the importance of both aesthetics and functionality. For Bernadette, the process of collaborating with project teams to create memorable yet functional spatial experiences are one of the most enjoyable aspects of her job.

EDUCATION

Bachelor of Science, Architecture – Portland State University

PROJECT EXPERIENCE

Weber Thompson Office at Watershed | Seattle, WA

ERW Workplace | Seattle, WA

WeWork SLU Tenant Improvement | Seattle, WA

Revel Restaurant Tenant Improvement | Seattle, WA

Le Caviste Tenant Improvement | Seattle, WA

Ian Mens Store Tenant Improvement | Seattle, WA

Lumen Field Suites | Seattle, WA

The Spa at Willows Lodge | Woodinville, WA

Nexus | Seattle, WA

Helios | Seattle, WA

Stratus | Seattle, WA

Fremont & 9th | Las Vegas, NV

Sunset Electric | Seattle, WA

4730 California | Seattle, WA

Pike Motorworks | Seattle, WA

Gunbarrel Center | Boulder, CO

Rachael Meyer PLA, LFA, GRP, LEED AP

LANDSCAPE ARCHITECTURE PRINCIPAL



Data I



Watershed



Nexus

Rachael Meyer has a wealth of experience in commercial, residential, and public projects. She excels at communication, a talent that helps her build consensus while accepting input from her clients, consultants and other key stakeholders.

Rachael is passionate about green roofs, urban agriculture and sustainable strategies, and integrates these passions into each of her designs. She regularly speaks and writes about her research, which ranges from water management practices to functional landscapes. She is also a Salmon Safe reviewer.

Active in the community, Rachael has served on a variety of professional boards, including the UW Landscape Professional Advisory Committee, Architects Without Borders, and the Washington Association of Landscape Architects Executive Board.

EDUCATION

Bachelor of Landscape Architecture – University of Washington

Emergent Leadership Training – Emerge Leadership Project

PROJECT EXPERIENCE

Watershed | Seattle, WA

Data I | Seattle, WA

Ballard Blocks II | Seattle, WA

Solis | Seattle, WA

Modera First Hill | Seattle, WA

Nexus | Seattle, WA

425 Fairview | Seattle, WA

Kiara | Seattle, WA

Stratus | Seattle, WA

802 Pine | Seattle, WA

LeMay Family Sculpture Garden | Tacoma, WA

Bullitt Center | Seattle, WA*

**A Berger Partnership Project*

ARTICLES

Reusing stormwater can release untapped enefits. Daily Journal of Commerce, 2016



WEBER THOMPSON

900 N 34th St, Suite 200
Seattle, WA 98103
206-344-5700

WWW.WEBERTHOMPSON.COM